

Introduction

► Feature

Line lifting:	362 kg / 800 lb wire rope first layer
Recommended Wire rope:	4.0 mm × 18.3 m (5/32" × 60') galvanized aircraft A7 × 19
Brake:	Mechanical spring applied and permanent motor dynamic brakes together
Control:	Handheld pendant switch powers the hoist

► Unpacking

- Hoist assembly..... 1 pc

► Read this manual carefully

You should carefully read and understand this manual before operating it. Careless hoist operation may result in personal injury hazards or property damage.

► Information requesting or parts ordering

Please specify the following information:

- Hoist PN
- Part description
- Serial number
- Replacement part number
- Quantity for each part

Installation

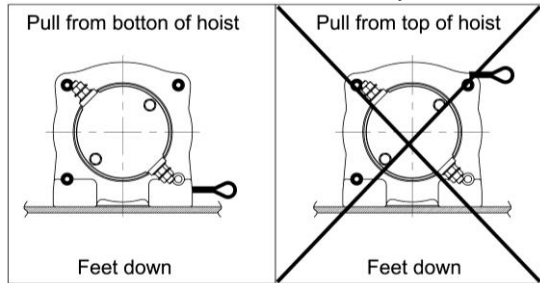
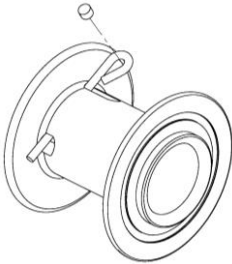
Before using the hoist, make sure all electrical components have no corrosion or damaged; the environment should be clear and dry.

► Hoist mounting

Four (4) M8 x 25L 8.8 grade with 22 N-m torque settings (maximum) high tensile steel bolts must be used in order to sustain the loads imposed on the winch mounting.

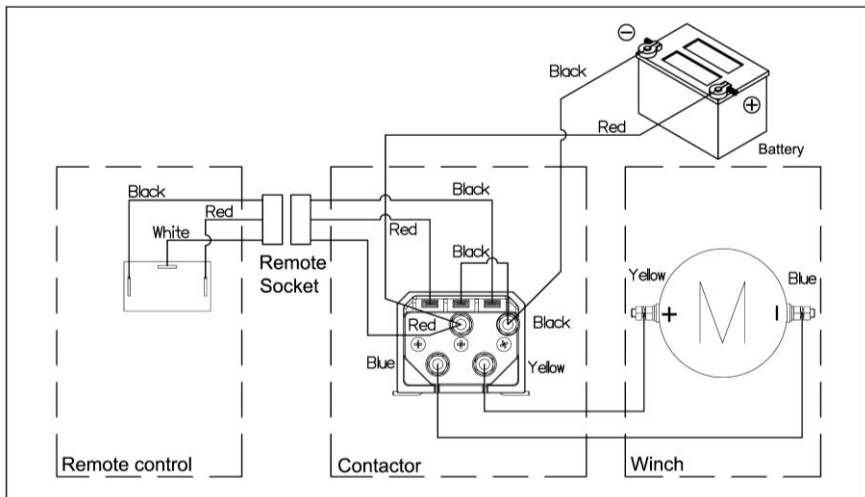
► Wire Rope Replacement

- Feed the end of the wire rope into anchor hole in the drum and make a self-circle on the anchor pocket. Insert a wedge in the self-circle and tighten the rope for securing purpose.
- Make sure the first layer of wire rope is tight and maintain a freeboard at least 1.5 x rope diameter.
- Wire rope shall be wound in an under-wound orientation only.



► Recommended Wiring Diagram

Attach the black lead firmly to the negative (–) battery terminal and red lead to the positive (+) battery terminal. The voltage drop for the winch motor must not exceed 10% of the nominal voltage of 12V/24V DC.



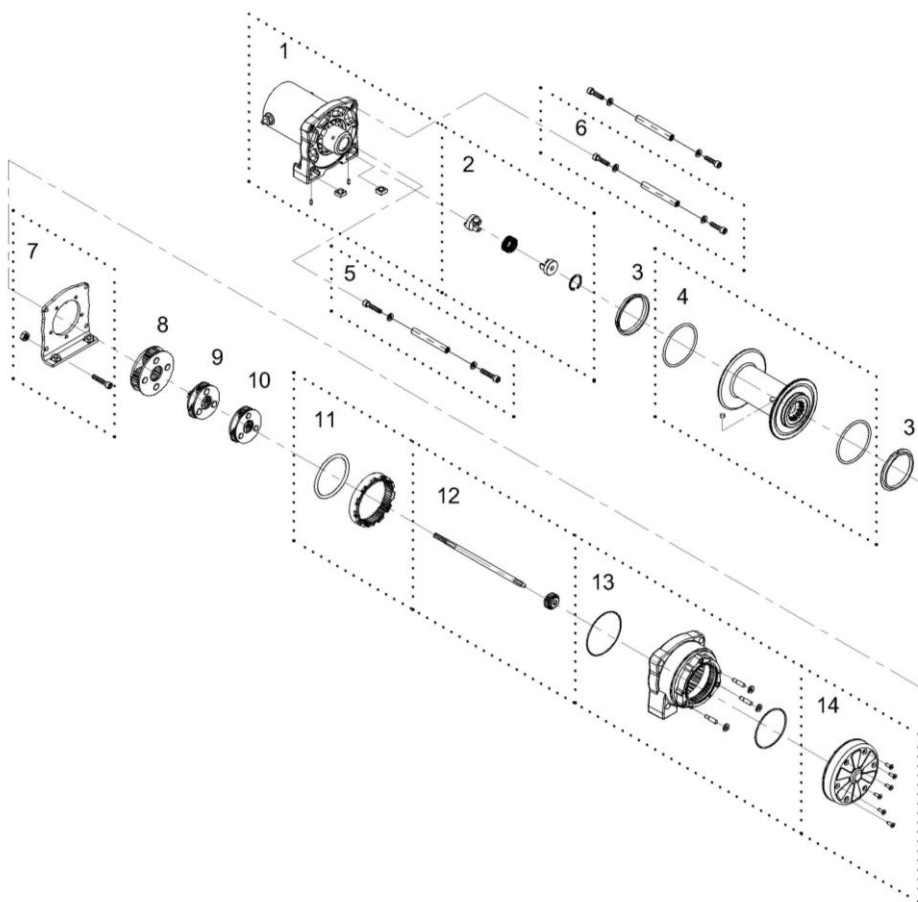
Warning

- The operator shall always work in compliance with the operating instructions.
- Overload shall be forbidden and overload protection shall be required.
- Ban on transporting persons and excessive inching shall be avoided.
- Don't try to move obstructed loads and side-pull of load is not allowed.
- The rope winding on the drum shall remain 5 wraps from the drum.

Parts List

Item	No.	Description	Part No.	Qty
1		Motor 12V	882417	1
		Motor 24V	882288	
2		Motor couple kit	880988	1
3		Drum bushing	880990	2
4		Drum kit	882319	1
5		Tie bar kit	881007	1
6		Tie bar kit	881008	2
7		Gearbox support rack	880994	1
8		3 rd stage carrier	880995	1
9		2 nd stage carrier	880996	1
10		1 st stage carrier	881009	1
11		2 nd ring gear kit	880998	1
12		1 st shaft kit	881010	1
13		Gearbox kit	882418	1
14		Gearbox rear cover kit	882320	1

Hoist Assembly



Ver:02